



Immunomodulatory Potential of Cannabidiol in Multiple Sclerosis: a Systematic Review

Alessia Furguele¹ · Marco Cosentino¹ · Marco Ferrari¹ · Franca Marino¹

Received: 16 December 2020 / Accepted: 6 January 2021 / Published online: 25 January 2021
© The Author(s) 2021

Abstract

Multiple sclerosis (MS) is the most common chronic autoimmune disease of the central nervous system. Efficacy of treatments for MS is associated with risk of adverse effects, and effective and well-tolerated drugs remain a major unmet need. Cannabis (*Cannabis sativa* L., fam. Cannabaceae) and cannabinoids are popular among MS patients to treat spasticity and pain. Cannabinoids are endowed with remarkable immunomodulating properties, and in particular the non-psychotropic cannabinoid cannabidiol (CBD) is increasingly recognized as anti-inflammatory and immunosuppressive, nevertheless with excellent tolerability even at high doses. In this systematic review, we retrieved and critically evaluated available evidence regarding the immune and disease-modifying effects of CBD in experimental autoimmune encephalomyelitis (EAE) and in MS. Evidence in rodent models of EAE strongly supports CBD as effective, while clinical evidence is still limited and usually negative, due to paucity of studies and possibly to the use of suboptimal dosing regimens. Better characterization of targets acted upon by CBD in MS should be obtained in ex vivo/in vitro studies in human immune cells, and higher doses should be tested in well-designed clinical trials with clinically relevant efficacy endpoints.

Keywords Multiple sclerosis · Experimental autoimmune encephalomyelitis · Cannabidiol · Immunomodulation

Introduction

Multiple sclerosis (MS) is the most common chronic autoimmune disease of the central nervous system (CNS), affecting more than two million people worldwide. MS has unknown etiology, is at least as twice as common in women than in men, and usually begins in adults 20–45 years of age, developing through a highly heterogeneous and unpredictable course: neurological deficits are usually reversible in the early phases but over time evolve in progressive neurological deterioration. Based on the clinical course, MS is usually divided in four major forms: (i) relapsing-remitting MS (RRMS), which affects 85% of MS patients, (ii) secondary progressive MS (SPMS), which may develop in some RRMS patients, (iii) primary progressive MS (PPMS), which affects approximately 10% of MS patients, and (iv) progressive-relapsing MS

(PRMS), occurring in fewer than 5% of patients (Dobson and Giovannoni 2019; Reich et al. 2018; Oh et al. 2018; Thompson et al. 2018).

MS is characterized by inflammation, demyelination and neurodegeneration, which are regarded as resulting from autoreactive myelin-specific T lymphocytes entering the CNS. T cells undergo reactivation in the CNS by local antigen presenting cells, eventually triggering an inflammatory cascade including release of proinflammatory cytokines such as tumor necrosis factor (TNF)- α , and interferon (IFN)- γ , recruitment of additional inflammatory cells (T cells, monocytes, B cells), persistent activation of macrophages resulting in oligodendrocyte death and further demyelination (Yamout and Alroughani 2018; Hemmer et al. 2002).

MS has no known cure so far, nonetheless several immunomodulatory and immunosuppressive treatments have proven helpful at slowing disease progression and reducing relapse rates, including IFN- β , glatiramer acetate, dimethyl fumarate, the type II topoisomerase inhibitor mitoxantrone, the inhibitor of pyrimidine synthesis teriflunomide, the purine analog cladribine, the sphingosine-1-phosphate (S1P) receptor agonists fingolimod, siponimod, and ozanimod, and several monoclonal antibodies such as natalizumab, alemtuzumab,

✉ Marco Cosentino
marco.cosentino@uninsubria.it

¹ Center for Research in Medical Pharmacology and Center for Research in Neuroscience, University of Insubria, Via Ottorino Rossi n. 9, 21100 Varese, VA, Italy

ocrelizumab. The clinical efficacy and risk-benefit ratio of all these treatments are however still far from optimal, and the more effective medications have a higher risk of serious adverse reactions (Gholamzad et al. 2019; Thompson et al. 2018).

Besides disease-modifying treatments targeting pathogenic mechanisms, management of MS includes a wide array of pharmacological and non-pharmacological approaches aimed at minimising disease impact while maximising quality of life (Gholamzad et al. 2019; Thompson et al. 2018). Among pharmacological treatments for the symptomatic management of MS, cannabis (*Cannabis sativa* L., fam. Cannabaceae) and its derivatives, such as Δ^9 -tetrahydrocannabinol (Δ^9 -THC) and the non-psychoactive cannabinoid cannabidiol (CBD), are increasingly recognized as effective to treat spasticity and pain (Yadav et al. 2014). In 2010, nabiximols – a formulated cannabis extract containing Δ^9 -THC and CBD in a 1:1 ratio – was licensed in UK for the treatment of spasticity due to MS, and it is currently marketed under the trade name of Sativex® in more than 25 countries outside the USA (<https://www.gwpfarm.co.uk/healthcare-professionals/sativex>). The use of cannabis and cannabinoids is widespread and well accepted among patients with MS. Epidemiological studies show that MS patients increasingly use cannabis preparations for a range of symptoms, including sleep disturbances, pain, anxiety, spasticity and even depression. Across the surveys, current use of cannabis is reported by 20–60% of people with MS, and 50–90% are in favour of legalization, would consider usage if it were legal, and ask for more scientific evidence (Schabas et al. 2019; Brenton et al. 2018; Loraschi et al. 2016; Banwell et al. 2016).

Several lines of evidence indicate that cannabinoids have immunomodulatory and immunosuppressive properties, suggesting these drugs as potential therapeutics in chronic inflammatory diseases (Klein 2005), and cannabinoid receptors have been recently proposed as therapeutic targets for autoimmune diseases including MS (Gonçalves and Dutra 2019). Cannabis use in clinical practice has been historically hampered by the addictive potential of Δ^9 -THC, as well as by its psychoactive effects, such as cognitive impairment, psychosis, dysphoria, and anxiety. CBD however is devoid of any drug abuse liability (Babalonis et al. 2017) and is well tolerated in humans up to 6000 mg/day p.o. (Taylor et al. 2018; Iffland and Grotenhermen 2017; Bergamaschi et al. 2011). CBD has recently received Food and Drug Administration (FDA) and European Medicines Agency (EMA) approval for seizures associated with Lennox-Gastaut syndrome or Dravet syndrome (<https://www.epidiolex.com/>, Chen et al. 2019). CBD has prominent anti-inflammatory and even immunosuppressive effects (Nichols and Kaplan 2020; Zurier and Burstein 2016; Burstein 2015), and evidence exists that it could be beneficial in chronic inflammatory conditions, such as inflammatory bowel disease (Esposito et al. 2013), rheumatoid

arthritis (Lowin et al. 2019), neurodegenerative disorders (Cassano et al. 2020), and even in acute inflammation due to SARS-CoV-2 infection (Costiniuk and Jenabian 2020). Despite the widespread use of CBD for the symptomatic management of MS, the possible relevance of its immunomodulatory properties and its potential as disease-modifying drug in MS patients has so far received little consideration.

In the present review, after a thorough description of the complex pharmacology of CBD, which includes several molecular targets besides cannabinoid receptors, available pre-clinical and clinical evidence about the immune effects of CBD in MS is presented and discussed, to provide a summary of available knowledge and define a roadmap for the extensive assessment of the immunomodulatory potential of CBD in MS patients.

Pharmacology of CBD

Pharmacodynamics CBD is a natural cannabinoid isolated in 1940 from cannabis plants (Mechoulam et al. 1970) (Fig. 1). It is the major non-psychoactive cannabinoid and occurs naturally in appreciable amounts in the plant leaves and flowers, accounting for up to 40% of the plant's extracts obtained from newly developed varieties poor in Δ^9 -THC (Andre et al. 2016).

CBD has a quite complex receptor pharmacology (Table 1). CBD is indeed a weak activator of cannabinoid receptors type 1 (CB1) and type 2 (CB2). Actually, CBD may also act as a negative allosteric modulator of the CB1 receptor, and as an inverse agonist of the CB2 receptor (Pertwee 2008). CBD however also acts on several mammalian transient receptor potential (TRP) channels, including TRPV (“V” for vanilloid), TRPA (“A” for ankyrin), and TRPM (“M” for melastatin) (Muller et al. 2019). CBD acts as an agonist on TRPV1, resulting in capsaicin-like analgesia (Iannotti et al. 2014). CBD may also bind and activate TRPV2, TRPV3, and TRPA1, while being an antagonist at TRPM8 (Muller et al. 2019). CBD is an agonist of the peroxisome proliferator-activated receptor (PPAR) γ , which a

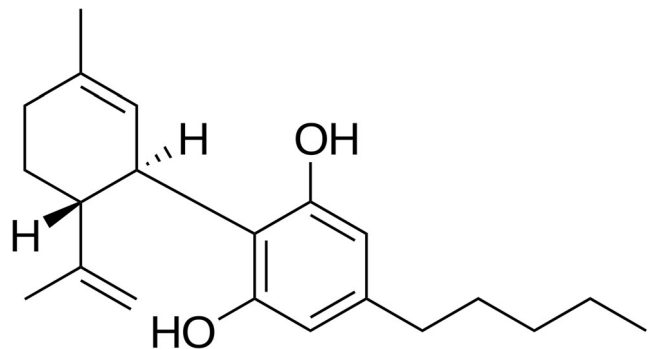


Fig. 1 Chemical structure of CBD

Table 1 CBD pharmacology

Target	Action	Reference
CB1	Weak agonist negative Allosteric modulator	Pertwee (2008)
CB2	Weak agonist inverse agonist	Pertwee (2008)
TRPV1, TRPV2, TRPV3, TRPA1	Agonist	Muller et al. (2019)
TRPM8	Antagonist	Muller et al. (2019)
PPAR γ	Agonist	O'Sullivan et al. (2009)
GPR55	Antagonist	Atalay et al. (2019)
GPR3, GPR6, GPR12	Inverse agonist	Atalay et al. (2019)
5-HT1a	Agonist	Russo et al. (2005)
A _{2A}	Agonist	Ribeiro et al. (2012)
μ and δ opioid receptors	Allosteric modulator	Kathmann et al. (2006)

Abbreviations: *CB* cannabinoid receptors, *TRP* transient receptor potential channels, “*V*” for vanilloid, “*A*” for ankyrin, and “*M*” for melastatin, *PPAR* γ peroxisome proliferator-activated receptor γ , *GPR* G protein-coupled orphan receptors, *5-HT1a* 5-hydroxytryptamine receptor 1a, *A_{2A}* adenosine receptor 2A

ligand-inducible transcription factor belonging to the superfamily of nuclear receptors (O'Sullivan et al. 2009). CBD also binds some G protein-coupled orphan receptors (GPR). In particular, it has been reported to act as an antagonist at GPR55, and as an inverse agonist at GPR3, GPR6 and GPR12 (Atalay et al. 2019). Finally, CBD may be an agonist at serotonin (5-hydroxytryptamine, 5-HT) receptors 1a (Russo et al. 2005), and at the adenosine A_{2A} receptors (Ribeiro et al. 2012), and possibly an allosteric modulator at μ and δ opioid receptors (Kathmann et al. 2006).

Remarkably, besides its direct effects on multiple receptor targets, CBD has prominent direct and indirect antioxidant effects (Atalay et al. 2019) as well as the ability to block the enzyme fatty acid amide hydrolase, resulting in an inhibited degradation and therefore increased levels of anandamide, a fatty acid neurotransmitter acting as agonist on CB1 and CB2, as well as on several other receptor targets, including among others TRPV1, TRPM8, and GPR55 (Lim et al. 2017).

Pharmacokinetics CBD pharmacokinetics (PK) has been recently systematically reviewed by Millar et al. (2018), who retrieved, summarized and discussed all articles reporting PK data of CBD in humans. The authors conclude that, despite the widespread clinical use of CBD, information about its PK is limited and inconsistent, and highlight the need for thorough studies aimed at the better understanding of key PK parameters such as bioavailability and half-life.

Pharmacogenetics CBD acts on many molecular targets (Table 1), most of them with evidence of genetic variability linked to some functional consequences. For instance, CB1 and CB2 have been extensively studied for involvement in cannabis dependence (Hryhorowicz et al. 2018), mutations in TRPV channels are known from genetic pain research and may modulate the effects of experimental analgesics targeting

TRPV1 or TRPV3 (Lötsch and Geisslinger 2011), PPAR γ genetic variants are a promising target for precision medicine in Type 2 diabetes mellitus (Khatami et al. 2019). No studies exist so far investigating the role of such genetic variants in the effects of CBD, nevertheless, pharmacogenomic clinical trials of cannabinoids are currently ongoing, such as those examining the effects of the catechol-O-methyl-transferase (COMT) gene on the effects of CBD (NCT02116010 n.d.; NCT02492074 n.d.).

Compared to the lack of pharmacogenetic studies about CBD targets, more evidence exists concerning CBD PK. CBD absorption and distribution are influenced by P-glycoprotein (P-gp), an efflux protein encoded by *ABCB1* gene, also known as multidrug resistance gene (MDR1), located in chromosome7q21 and composed of 28 exons (Hoffmeyer et al. 2000). SNPs in the *ABCB1* gene such as rs2032582 (c.2677G T > A), rs1045642 (c.3435C > T), and rs1128503 (c.1236 C > T) are known to modify P-gp expression and activity and in turn PK of many drugs. No information is however available about their potential relevance for CBD PK (Rui-Jian et al. 2017). CBD is metabolized by cytochrome P450 (CYP450) superfamily enzymes, and in particular by CYP3A4 and CYP2C9 (Stout et al., 2014), which are encoded by *CYP2C9* and *CYP3A4* genes. To date, 60 polymorphic alleles of the *CYP2C9* gene have been described, the most frequent being CYP2C9*2 (c.430 C > T), and CYP2C9*3 (c.1075 A > C) which lead to decreased enzyme activity and poor metabolizer phenotype (Jarrar and Lee 2014). In the case of CYP3A4 gene, 26 polymorphic alleles are known, and CYP3A4*2, CYP3A4*11, CYP3A4*12, CYP3A4*17 are the most common, resulting in reduced enzyme activity (Werk and Cascorbi 2014). Unfortunately, no information is so far available on the effect of these SNPs on CBD PK in humans. UDP-glucuronosyltransferase (UGT) enzyme family is also involved in CBD biotransformation (Stout and Cimino 2014), in particular UGT1A9, UGT2B7, and

UGT2B17. Important SNPs in the *UGT1A9* gene such as *UGT1A9* *3, *4, and *UGT1A9* *5 lead to the reduction or suppression of enzymatic activity (Olson et al. 2009). However, CBD glucuronidation has a minor role in overall elimination of the drug (Mazur et al. 2009), therefore genetic variants in UGT enzymes are unlikely to affect CBD PK to a major extent.

Aim

In the present review, we systematically retrieved and critically evaluated available evidence regarding the immune effects and the disease-modifying activity of CBD in MS and in experimental autoimmune encephalomyelitis (EAE), its preclinical animal model, to provide a state-of-the-art compendium of the immunomodulatory potential of CBD in MS.

Search Strategy

This systematic review was conducted in accordance with the PRISMA statement (Moher et al. 2009). Search algorithm was obtained by combining terms related to “cannabidiol” with those related to “multiple sclerosis” or “experimental allergic encephalomyelitis” as shown in Table 2, and search was thereafter performed in PubMed, Scopus and Web of Science databases (Fig. 2). References identified through this process were subsequently scanned for selection criteria. Inclusion criteria included studies of the peripheral and central immune effects of CBD, either pure or in botanical extracts, alone or together with other drugs. Excluded topics included review articles, duplicates, and studies of synthetic analogues, or metabolites of CBD. Thereafter, reference lists of the included

articles were screened for additional reports. Neither language nor year restrictions was applied and all reports issued in the period up to July 29, 2020 were included.

Results

Our literature search led to a total of 1808 reports. After screening for relevant titles and abstracts, 29 papers were assessed for full-text eligibility, and 26 studies were finally included in the review (Fig. 2). All the records screened are listed as supplementary material (Supplementary Table 1).

Preclinical Studies

We found a total of 20 in vivo and ex vivo/in vitro studies of CBD in preclinical models of MS (Table 3). Most animal studies were performed in (MOG_{35–55})-induced EAE in C57BL/6J mice. Individual studies however were also performed in EAE induced in mice by means of MSCH (Buccellato et al. 2011; Duchi et al. 2013), PLP_{139–151} (Gallily and Yekhtin 2019), TMEV (Mecha et al. 2013), and cuprizone (Sajjadian et al. 2017). One study made use of C57BL/6 J mice with adoptively transferred EAE (González-García et al. 2017), and another one was performed in Lewis rats with protein gp (69–88)-induced EAE (Zhou et al. 2019).

CBD was given i.p. in 12 out of 15 studies, most often at the dose of 5 mg/kg/day (6 studies), however also up to 20 mg/kg/day (Elliott et al. 2018), with highly variable schedules, administration beginning from immediately up to even 32–68 days after EAE induction (Buccellato et al. 2011), and lasting from 3 up to 60 days (Gallily and Yekhtin 2019). In

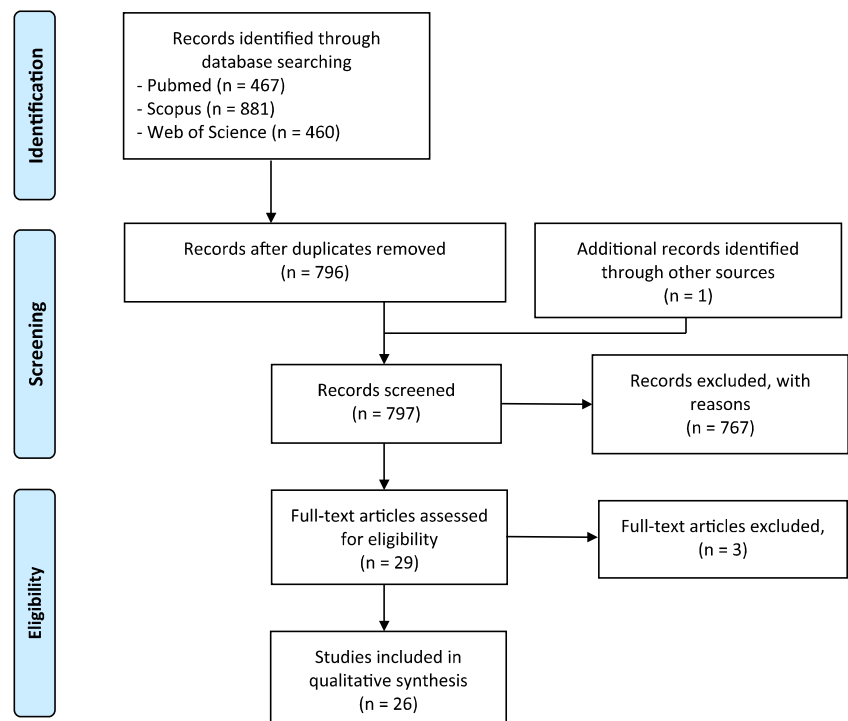
Table 2 Search algorithm for database screening

Cannabidiol	Multiple sclerosis
Cannabidiol	Multiple sclerosis
Cannabidiol-3-monomethyl ether	Multiple sclerosis, relapsing-remitting
5-(1,1-dimethylheptyl)cannabidiol	Multiple sclerosis, chronic progressive
Nabiximols	Experimental autoimmune Encephalomyelitis
6"-azidohehex-2"-yne-cannabidiol	Experimental allergic encephalomyelitis
Cannabidiol (abn-cbd, (-)-4-(3-3,4-trans-p-menthadien-(1,8)-yl)olivetol)	
4-(3-3,4-p-menthadien-(1,8)-yl)olivetol	
Desoxycannabidiol	
Cannabidiol hydroxyquinone	
Cannabidiol dimethyl ether	
HUF-101	

<https://www.ncbi.nlm.nih.gov/mesh/?term=cannabidiol>

<https://www.ncbi.nlm.nih.gov/mesh/?term=multiple+sclerosis>

<https://www.ncbi.nlm.nih.gov/mesh/?term=experimental+allergic+encephalomyelitis>

Fig. 2 Flow diagram of literature search

some studies, CBD was given by oral gavage (Nichols et al. 2020; Zhou et al. 2019), s.c. or intranasally (Duchi et al. 2013), or even as cream 1% applied on lower limbs (Giacoppo et al. 2015). In most cases, CBD was given as pure substance (12 studies), however in some cases it was administered as cannabis extract, together with Δ^9 -THC in variable proportions (Al-Ghezi et al. 2019a, b; Moreno-Martet et al. 2015; Buccellato et al. 2011; Gallily and Yekhtin 2019; Zhou et al. 2019).

Despite such heterogeneity, treatment with CBD was consistently effective usually resulting in reduced severity of EAE, including delayed onset of symptoms, attenuation of clinical signs and reduced disease progression. Many studies reported also improved CNS histology, with reduced neuroinflammation, microglia activation and peripheral monocyte and lymphocyte infiltration, as well as decreased demyelination.

Experimental evidence about biological mechanisms contributing to CBD-induced beneficial effects in EAE consistently pointed to reduction of proinflammatory cytokines such as IL-17A, IFN- γ , TNF- α , IL-6, and IL-1b, and increase of anti-inflammatory cytokines such as IL-4, IL-10 and TGF- β (Nichols et al. 2020; Al-Ghezi et al. 2019a, b; Elliott et al. 2018; Giacoppo et al. 2017; Giacoppo et al. 2015; Rahimi et al. 2015; Duchi et al. 2013; Zhou et al. 2019), as well as to induction of immunosuppressive MDSC (Al-Ghezi et al. 2019a; Elliott et al. 2018). Very few studies addressed the issue of target receptors involved in the effects of CBD (Moreno-Martet et al. 2015; Al-Ghezi et al. 2019b).

One study (Gallily and Yekhtin 2019) compared CBD to the anti-MS drug glatiramer showing that they were effective to the same extent in reducing EAE.

Preclinical investigation of CBD in EAE also included seven studies performed in ex vivo/in vitro models of encephalitogenic lymphocytes (Table 3), all based on T cells from lymph nodes or spleen of mice with (MOG_{35–55})-induced EAE, except for one which used astrocytes from TMEV-IDD SJL/J mice (Mecha et al. 2013). CBD was always used at concentrations ranging from 0,1 to 10 μ M, usually resulting in decreased proliferation and increased apoptosis of cells, as well as in inhibition of proinflammatory and activation of anti-inflammatory pathways. Only few studies investigated the molecular targets mediating CBD effects. Kozela et al. excluded the contribution of either CB1, CB2, 5-HT1A, TRPV1 or PPAR γ in CBD-dependent reduction of IL-17 secretion from T cells (Kozela et al. 2013), or of CB1 or CB2 in CBD-dependent inhibition of T cell proliferation (Kozela et al. 2011). No involvement of GPR55, CB1, or CB2 receptors was reported also by González-García et al. (2017), who studied CBD-induced inhibition of MOG_{35–55}/IL-12-induced IL-6 secretion and increased apoptosis in mouse encephalitogenic spleen cells, while Mecha et al. (2013) suggested a contribution by A2A receptors in CBD-induced reduced of CCL2 secretion from mouse astrocytes.

Clinical Studies

Our search provided a total of six studies performed in MS patients and/or on immune cells obtained from patients

Table 3 Effect of CBD in preclinical models of MS

Experimental model	Treatment	Main findings	Mechanisms/biological target	Ref
In vivo (MOG _{35–55})-induced EAE in C57BL/6J mice	CBD (75 mg/kg/day by oral gavage) 24 h after EAE induction and subsequently for 5 days	Reduction of clinical score at day 18 in severe but not in mild EAE Reduction of neuroinflammation and T cell infiltration in white matter tracts of brain and spinal cord	No change in percentage of Treg isolated from the lymph nodes and spleen, or of MDSC from spleen In ex vivo splenocytes restimulated with MOG _{35–55} for 48 h, CBD decreased percentage of IFN- γ producing CD8+ T cells but did not affect IL-17-producing CD8+ T cells In ex vivo splenocytes and lymphocytes from lymph nodes restimulated with MOG _{35–55} for 48 h, CBD did not affect IFN- γ and IL-17A production on day 3 and 10, but increased IFN- γ production on day 18	Nichols et al. (2020)
(MOG _{35–55})-induced EAE in C57BL/6J mice	CBD (10 mg/kg/day i.p.) or Δ 9-THC+ CBD (10 mg/kg/day i.p.) from day 10 after EAE induction until day 15/27	Δ 9-THC+ CBD (but not CBD alone) reduced clinical symptoms, brain infiltration of MNCs, CD3+ T cells and CD3+CD4+ T cells, and demyelination	Reduced IL-17A and IFN- γ production in ILN cell supernatants Changes in the expression in brain CD4+ T cells of several miRNAs involved in Th polarization and cell cycle arrest/apoptosis Upregulation of genes for FoxP3, STAT5, IL-10 and IL-4 and downregulation of genes for Tbet-1, IFN- γ , STAT3 and IL-17A in brain MNCs Increased production by brain MNCs of IL-10 and TGF- β and reduced production IL-17A, IFN- γ , TNF- α , IL-6, and IL-1b In brain MNCs increased apoptosis and decreased cell frequency in G0/G1 phase and increased frequency in G2/M phase Possible involvement of CB1 and CB2 receptors, based on results in CB1-/- CB2-/- animals	Al-Ghezi et al. (2019b)
(MOG _{35–55})-induced EAE in C57BL/6J mice	Δ 9-THC+ CBD (1:1 ratio) (10+10 mg/kg/day i.p.) from day 10 after EAE induction until day 15/18	Decreased EAE severity, including reduced cell infiltration and tissue damage in the brain	Increased spleen MDSC and reduced pro-inflammatory cytokines (IL-17A and IFN- γ) and increased anti-inflammatory cytokines (TGF- β and IL-10) in serum and spleen cells supernatants	Al-Ghezi et al. (2019a)

Table 3 (continued)

Experimental model	Treatment	Main findings	Mechanisms/biological target	Ref
(MOG ₃₅₋₅₅)-induced EAE in C57BL/6J mice	CBD (20 mg/kg/day i.p.) from day 9 to 25 post-EAE induction	Delayed onset and attenuated clinical signs of EAE	<p>Reduced abundance of <i>Akkermansia muciniphila</i> (A. muc) and decreased LPS biosynthesis in the gut</p> <p>Increased levels of SCFAs such as butyric, isovaleric, and valeric acids</p> <p>Reduced MNCs in the spinal cord and reduced CD3+CD4+ and CD3+CD8+ T cells in the CNS</p> <p>Reduced IFN-γ and IL-17 in serum</p> <p>Reduced gene expression of T-bet and ROR-γ and increased gene expression of IL-10 in splenic CD4+ T cells</p> <p>In ex vivo splenocytes restimulated with MOG35–55, reduced production of IFN-γ and IL-17, and increased production of IL-10</p> <p>Induction of highly immunosuppressive CD11b+Gr-1+ MDSCs which reduced clinical scores of EAE and cellular infiltration in the CNS</p>	Elliott et al. (2018)
(MOG ₃₅₋₅₅)-induced EAE in C57BL/6J mice	CBD (10 mg/kg/day i.p.) from day 14 until day 28 after EAE induction	Improved EAE clinical and histological score with reduced infiltration of inflammatory cells in the white matter of spinal cord	<p>MDSC depletion reversed CBD effects</p> <p>Suppressed IFN-γ and IL-17 staining and increased BDNF and PPARγ staining in spinal cord sections</p> <p>Upregulation of the PI3K/Akt/mTOR pathway and reduced expression of JNK and p-p38 in the MAPK pathway in the spinal cord</p>	Giacoppo et al. (2017)
(MOG ₃₅₋₅₅)-induced EAE in C57BL/6J mice	Δ 9-THC-BDS + CBD-BDS (30.8 mg/kg/day i.p., equivalent to about 10 mg/kg/day of pure Δ 9-THC+10 mg/kg/day of pure CBD) or CBD-BDS alone (20 mg/kg/day i.p., equivalent to about 13 mg/kg/day of pure CBD) at days 10–31 post MOG-inoculation	All treatments delayed symptoms onset but only Δ 9-THC-BDS+ CBD-BDS also improved disease progression	<p>Activation of CB1 receptors, but not of PPAR-γ</p>	Moreno-Martet et al. (2015)
(MOG ₃₅₋₅₅)-induced EAE in C57BL/6J mice	CBD cream 1% applied on lower limbs every 24 h up to 28 days after disease onset	EAE clinical score improvement and avoidance of EAE-associated body weight loss	<p>Reduced FoxP3 staining in spinal cord and reduced CD4 and CD8α staining in spleen</p> <p>Reduced TNF-α, IL-6, TGF-β and INF-γ and increased IL-10 in spinal cord</p>	Giacoppo et al. (2015)
		Reduced demyelination and axonal loss and complete resolution of inflammatory cells infiltration	<p>Reduced production of nitrotyrosine, iNOS and PARP, and reduced</p>	
		Increased response to mechanical stimuli		

Table 3 (continued)

Experimental model	Treatment	Main findings	Mechanisms/biological target	Ref
(MOG _{35–55})-induced EAE in C57BL/6J mice	CBD (5 mg/kg/day i.p.) or CBD+PEA (5 mg/kg/day each i.p.) for 3 days after disease onset.	All treatments attenuated cell infiltration and microglia activation in the spinal cord, but only CBD alone ameliorated neurological signs and disease progression, and decreased demyelination severity in the spinal cord	cleaved-caspase 3 expression in spinal cord All treatments decreased TNF- α , IFN- γ and IL-17 mRNA levels in spinal cord	Rahimi et al. (2015)
(MOG _{35–55})-induced EAE in C57BL/6J mice	CBD (5 mg/kg/day i.p.) on days 19, 20 and 21 after EAE induction	Ameliorated clinical signs and disease progression, decreased axonal damage, inflammation and CD3+ T cells infiltration in the spinal cord	Not assessed	Kozela et al. (2011)
Cuprizone-induced demyelination in C57Bl/6 mice	CBD (5 mg/kg/day i.p.) for 5 weeks	Decreased MOG-induced microglia/macrophage activation	Reversal of cuprizone-induced reduction of GSH, CAT, and SOD and increase of lipid peroxidation in the corpus callosum	Sajjadian et al. (2017)
MSCH-induced CREAE in Biozzi AB/H mice	Δ 9-THC-rich chemovar (ratio of Δ 9-THC: CBD 9:1) (50 mg/kg i.p.) or CBD-rich chemovar (ratio of Δ 9-THC: CBD 1:12) (50 mg/kg i.p.) or both (25+25 mg/kg i.p.) as single injection 32 days after CREAE induction or one injection/day from day 68 after CREAE induction for 7 days	Restoration of cuprizone-induced myelin loss and attenuated microglial accumulation in the corpus callosum midline Δ 9-THC-rich chemovar alone, for 7 days but not as single injection, reduced the overall neurological deficits CBD-rich chemovar alone, either as single injection or for 7 days, decreased neurological deficit during the relapse phase Δ 9-THC+CBD-rich chemovar had no effect, except an unexpected increase in neurological deficits in some animals	Not assessed	Buccellato et al. (2011)
MSCH-induced EAE in C57Bl/6 J mice	CBD (7 mg/kg s.c.) alone or +GA (6.7 mg/kg s.c. or intranasally) on the first day of disease onset	CBD s.c. or intranasally reduced the clinical signs of disease CBD+GA intranasally had more effect than CBD alone or CBD+GA s.c.	CBD and CBD+GA in intranasally reduced IL-6 and TNF- α expression in cerebellum CBD+GA intranasally induced proliferation of newly generated neurons in SVZ and SGZ of the hippocampus	Duchi et al. (2013)
PLP _{139–151} -induced relapsing–remitting EAE in SJL/J mice.	CBD (5 mg/kg i.p.) or CBD-rich (18%)/ Δ 9-THC-poor (1%) <i>Cannabis indica</i> extract (50 mg/kg i.p.) 5 days/week for 60 days, in comparison to glatiramer acetate (50 mg/kg s.c.) CBD (5 mg/kg/day i.p.) from day 1 to 7 or 10 post-infection	CBD and <i>C. indica</i> extract inhibited EAE clinical symptoms with a rapid onset and to the same extent as glatiramer	Not assessed	Gallily and Yekhtin (2019)
TMEV-IDD SJL/J mice		Decreased leukocyte infiltration and attenuated microglia activation in brain and spinal cord	Blockade of TMEV-induced release of sVCAM-1 in endothelial cells, and	Mecha et al. (2013)

Table 3 (continued)

Experimental model	Treatment	Main findings	Mechanisms/biological target	Ref
Adoptively transferred EAE (at-EAE) in C57BL/6 J mice	CBD (5–10 mg/kg/3 times per week or 50 mg/kg/day i.p.) from day 0 until day 23 after at-EAE induction	Dose-dependent reduction of clinical signs and tissue lesions in the <i>subiculum</i>	consequently reduced leukocyte adhesion to endothelial cells Reduced expression of CCL2, CCL5 and CCR2 mRNA in prefrontal cortex Reduction of at-EAE-induced infiltration of microglia No effect on at-EAE-induced decrease of CB1 receptors, but reduction of at-EAE-induced increase of CB2 and GPR55 receptors Highest CBD doses also reduced T cells and macrophages in the lumbar spinal cord as well as axonal damage and demyelination	González-García et al. (2017)
Protein gp (69–88)-induced EAE in Lewis rats	CanmiMed Oil@ Huile (Δ^9 -THC:CBD 10:10 and 1:20) (215 mg/kg/day by oral gavage) from day 6 to 18 post-EAE induction	Both formulations improved neurological disability score (NDS)	Reduced TNF- α expression and enhanced BDNF production in spinal cord	Zhou et al. (2019)
Ex vivo/In vitro MOG _{35–55} -specific T cell line from lymph node cells of C57BL/6 mice	In APC/T cells cocultures, CBD (5 μ M) +MOG _{35–55} (5 μ g/ml) for 8 h (gene profiling) or 24 h (ELISA)	Decreased Xcl1, Il12a, Dusp6 and increased Btla, Lag3, and Irf4 mRNA levels Decreased IL-1 β and IL-3 secretion	Downregulation of proinflammatory transcription factors and pathways favouring Th17 differentiation and function Upregulation of gene expression patterns promoting T cell exhaustion/tolerance and IFN-dependent anti-proliferative program	Kozela et al. (2016a)
MOG _{35–55} -specific T cell line from lymph node cells of C57BL/6 mice	In APC/T cells cocultures, CBD (5 μ M) +MOG _{35–55} (5 μ g/ml) for 8 h	Increased CD4+CD25–CD69+ and CD4+CD25–LAG3+ T cells, and no effect on CD4+CD25+ T cells	Downregulation of APC/T cells interactions and induction of antioxidant mechanisms Decreased STAT3 and Akt phosphorylation and increased STAT5 phosphorylation Increased EGR2, LAG3, STAT5 and IL-10 mRNA levels Increased levels of energy promoting genes (Lag3, Icos, Nfatc1, Ndr1, Cdkn1a, Casp4 and Fas) Decrease CD19 ^{high} MHCII ^{high} , CD19+CD25+ and CD19 ^{high} CD69 ^{high} B cells	Kozela et al. (2015)
MOG _{35–55} -specific T cell line from lymph node cells of C57BL/6 mice	In APC/T cells cocultures, CBD (0.1–1–5 μ M)+MOG _{35–55} (5 μ g/ml) for 8 h (gene profiling) or 24 h (ELISA and FACS analysis)	Dose-dependent decrease of IL-6 and IL-17, but not of TNF- α and IFN- γ , gene expression and secretion	No involvement of CB1, CB2, 5-HT1A, TRPV1 or PPAR γ in the effects of CBD on IL-17 secretion	Kozela et al. (2013)

Table 3 (continued)

Experimental model	Treatment	Main findings	Mechanisms/biological target	Ref
MOG _{35–55} -specific T cell line from lymph node cells of C57BL/6 mice	In APC/T cells cocultures, CBD (1, 5, 10 μM)+MOG _{35–55} peptide (1 or 2.5 μg/ml) for 72 h	Inhibition of T cell proliferation	No involvement of either CB1 or CB2 receptors	Kozela et al. (2011)
CD4+ T cells from spleen of (MOG _{35–55})-induced EAE in C57BL/6J mice	CBD (10 mg/kg/day i.p.) for 7 days after EAE induction Isolation of CD4+ T cells and 48 h treatment with 30 μg/ml MOG without/with CBD 10 μM	Reversal of EAE-induced proinflammatory phenotype of CD4+ T cells	Modulation of histone methylation (H3K4me3 and H3K27me3) and non-coding RNA (miRNA and lncRNA)	Yang et al. (2019)
Encephalitogenic spleen cells (MOG _{35–55} +IL-12) from C57BL/6J mice with (MOG _{35–55})-induced EAE	CBD (5–10 μM) for 24 or 48 h	Inhibition of MOG _{35–55} /IL-12-induced IL-6 secretion and increased apoptosis	Increased ROS levels No involvement of GPR35, CB1, or CB2 receptors	González-García et al. (2017)
Astrocytes from TMEV-IDD SJL/J mice	CBD (1–5 μM) and IL-1β (10 ng/ml)+ TNF-α (10 ng/ml) for 6 h	Reduced CCL2 secretion	A2A receptors involved	Mecha et al. (2013)

Abbreviations: *AB/H* antibody high, *APC* antigen-presenting cell, *BDNF* brain-derived neurotrophic factor, *Btla* B- and T lymphocyte attenuator, *Casp4* caspase 4, *CAT* catalase, *CB1* cannabinoid receptor type 1, *CB1*–*CB2*–*CB1* and *CB2* double-knockout, *CB2* cannabinoid receptor type 2, *CBD*-*BDS* CBD- botanical drug substance, *CBD* cannabidiol, *MDS*s myeloid-derived suppressor cells, *CCL2* C-C Motif Chemokine Ligand, *CCL5* C-C Motif Chemokine Ligand 5, *CCR2* C-C Motif Chemokine Receptor 2, *Cdkn1a* cyclin dependent kinase inhibitor 1a, *CNS* central nervous system, *CREAE* chronic relapsing experimental autoimmune encephalomyelitis, *Dusp6* dual specificity phosphatase 6, *EAE* experimental autoimmune encephalomyelitis, *EGR2* early growth response protein 2, *Foxp3* forkhead box P3, *G0* gap 0, *G1* gap 1, *G2* gap 2, *GA* glutaric acid, *GPR35* G protein-coupled receptor 55, *GSH* glutathione, *i.p.* intraperitoneal, *Icos* inducible T cell costimulatory, *IFN-γ* interferon-γ, *IL* interleukin, *IL12a* interleukin-12 subunit alpha, *iLN* inguinal lymph nodes, *iNOS* inducible nitric oxide synthase, *Irf4* Interferon regulatory factor 4, *JNK* c-Jun N-terminal kinase, *Lag3* lymphocyte-activation gene 3, *M* mitosis, *MAPK* mitogen-activated protein kinase, *miRNAs* microRNAs, *MNG*s mononuclear cells, *MOG* myelin oligodendrocyte glycoprotein, *MS* multiple sclerosis, *MSC* mouse spinal cord homogenate, *mTOR* mammalian target of rapamycin, *Ndrp1* N-Myc downstream regulated 1, *NDS* nasal delivery system, *Nfya1* nuclear factor of activated T cells, *p-p38* phosphorylated p38, *PARP* poly (ADP-ribose) polymerase, *PEA* palmitoylethanolamide, *P13K* phosphoinositide 3-kinase, *PLP* proteolipid protein, *PPAR-γ* peroxisome proliferator-activated receptor gamma, *RORγ* RAR-related orphan receptor gamma, *s.c.* subcutaneous, *SCFAs* short chain fatty acids, *SGZ* subgranular zone, *SOD* Cu/Zn superoxide dismutase, *STAT3* signal transducer and activator of transcription 3, *STAT5* signal transducer and activator of transcription 5, *sVCAM-1* soluble vascular cell adhesion molecule-1, *SVZ* subventricular zone, *Tbet* T-box expressed in T cells, *TGF-β* transforming growth factor beta, *Th* T helper, *TMEV-IDD* Theiler's murine encephalomyelitis virus-induced demyelinating disease, *XCl2* Chemokine (C motif) ligand 2, *Δ9-THC* *BDS* *Δ9-THC*- botanical drug substance, *Δ9-THC* delta-9-tetrahydrocannabinol

(Table 4). Of these, four studies examined the peripheral immune profile of patients treated with various cannabinoid preparations, one used CBD in ex vivo cultures of PBMC from patients and one did both.

Out of the five studies in patients, three were performed in small groups of subjects treated with nabiximols (a specific Cannabis extract approved in 2010 as a botanical drug with the trade name of Sativex to treat spasticity and pain in MS, and which is administered by mouth spray containing 2,7 mg of Δ^9 -THC and 2,5 mg of CBD per puff). All the three studies were observational, nabiximols being given according to approved indications for periods of 4–6 weeks (Sorosina et al. 2018; Santoro et al. 2017; Centonze et al. 2009). As such, they included patients with different types of MS (for instance, RRMS, PPMS, SPMS in the study by Sorosina et al. (2018)), or both untreated and treated with IFN- β (for instance, in the study by Santoro et al. (2017)). None of these studies reported any significant effect on peripheral immunity, and in particular Centonze et al. (2009) included detailed results on the immune profile of the 20 patients recruited, showing no modification of either CD3+, CD14+, CD19+, CD56+, CD4+, or CD8+ cell frequency in peripheral blood, as well as no modification of CB1 or CB2 expression on those same cells. Quite interestingly, Centonze et al. (2009) also reported no efficacy of nabiximols on pain or spasticity in their patient cohort. In this regard, Sorosina et al. (2018) in their study performed an analysis of MS patients with spasticity responding to nabiximols, reporting in whole blood upregulation of genes belonging to the ribosome pathway and downregulation of genes related to immune system, cell motility/migration and nervous system.

The remaining two studies are on the contrary clinical trials aimed at evaluating the effects of cannabinoids on MS symptoms. Neither studies employed pure CBD as test drug, nonetheless they were included in the analysis since both employed preparations containing significant amounts of CBD and reported data on patients' peripheral immune functions. The first one (Killestein et al. 2003) is a crossover study including 16 MS patients (10 with SPMS and 6 with PPMS), receiving the following treatments each for 4 consecutive weeks, separated by 4-weeks washout: dronabinol, *C. sativa* whole plant standardized extract (containing THC 2.5 mg and 20–30% CBD), and placebo. All treatments had no effects either on the frequency of circulating T and B cells, monocytes and NK cells, or on plasma levels of TNF- α , IL-12p40, IL-12p70 and IL-10, or on ex vivo proliferation of T cells. Remarkably, treatment with the *C. sativa* whole plant extract resulted in increased TNF- α production in ex vivo LPS-stimulated whole blood, and 7 MS patients with dronabinol- and/or *C. sativa* whole plant extract-related adverse event scores above median had also an increase in plasma IL-12p40 (Killestein et al. 2003).

The second one (Katona et al. 2005) reports data derived from the Cannabinoids in MS (CAMS) study, a large

randomized controlled trial to evaluate the therapeutic efficacy of cannabinoids (Zajicek et al. 2005). In the original study, 630 patients with stable MS with muscle spasticity from 33 UK centres were randomised to receive oral Δ^9 -THC, a whole plant extract standardized to Δ^9 -THC:CBD 2:1 (0,25:0,125 mg, Cannador), or placebo. Results of the whole study showed evidence of a small treatment effect on muscle spasticity (Zajicek et al. 2005). Katona et al. (2005) report data from 100 of those patients (74 SPMS and 26 PPMS), showing no effect on serum levels of IFN- γ , IL-10, IL-12 or CRP, or on frequency of circulating IFN- γ -expressing CD3+ T cells.

Ex vivo/in vitro studies include a report showing that nabiximols dose-dependently reduces TNF- α , IL-6 and IL-10 release in cultured PBMC from both healthy subjects and from MS patients, either untreated and treated with nabiximols for pain and spasticity (Sorosina et al. 2018), as well as an investigation showing that CBD in the μ M concentration range suppressed proliferation, decreased TNF- α -, IFN- γ -, and IL-17A-expressing CD3+ T cells as well as IL-2- and GM-CSF-expressing CD3+ T cells more effectively in cells from MS patients than from healthy subjects (Zgair et al. 2017). In both studies, CBD alone (Zgair et al. 2017) or together with Δ^9 -THC (Sorosina et al. 2018), was active in the μ M concentration range.

Discussion

Several lines of evidence strongly support the general immunomodulatory properties of CBD, which is an established anti-inflammatory agent endowed even with some immunosuppressive properties (reviewed in Nichols and Kaplan (2020) and in Peyravian et al. (2020)). In agreement with such favourable premises, our systematic review retrieved a total of 20 in vivo and ex vivo/in vitro studies of CBD in preclinical models of MS, all in rodents and including several different animal models of EAE, consistently pointing to CBD as effective in reducing the clinical and histological severity of EAE in animals, as well as to inhibit relevant encephalitogenic cellular activities in in vitro models. On the contrary, just a few studies could be identified in the clinical setting, the vast majority of them reporting no effects on immune profiles or functions. Such a major discrepancy between preclinical and clinical studies requires careful consideration, in order to identify likely explanations.

Most of the animal studies were performed in C57BL/6 J mice immunized with MOG_{35–55}, a chronic animal model of MS which resembles primary and secondary progressive MS, and which mostly involves CD8+, CD4+, Th17, and regulatory T cells, B cells, as well as monocytes and macrophages (Procaccini et al. 2015; Kipp et al. 2017). CBD was however also effective in SJL/J mice immunized with PLP_{139–151}, which better recapitulates relapsing–remitting MS, as well as

Table 4 Studies in MS patients

Type of study	Gender (m/f)	Age (years) mean \pm SD (range)	Disease duration (years) mean \pm SD	EDSS score mean (min-max)	Treatment	Main findings	Ref
Clinical							
19 MS patients (1 RRMS, 16 SPMS, 2 PPMS) with spasticity responding to 4-weeks nabiximols	8/11	52.0 \pm 7.5	21.5 \pm 9.9	7.0 (5–8.5)	Nabiximols (on average 7 puffs/each)	In whole blood, upregulation of genes belonging to the ribosome pathway and downregulation of genes related to immune system, cell motility/migration and nervous system Key differentially expressed genes included <i>NFKB1</i> , <i>RPS3</i> , <i>FYN</i> , <i>MAPK14</i> , <i>TP53</i>	Sorosina et al. (2018)
30 SPMS patients (7 treated with IFN- β 1b; 12 previously treated with IFN- β 1; 11 never treated with IFN- β 1b)	10/20	54.2 \pm 11.7	15.4 \pm 8.5	6.4	Nabiximols titration during 4 weeks, with dose increase according to a fixed scheme	No difference in the CB1 or CB2 mRNA levels in peripheral blood leukocytes, before treatment and after one and three months of treatment in any groups, except for patients currently on IFN- β 1b that showed decrease CB2 mRNA levels after one and three months of nabiximols treatment No effect on methylation of CNR1 or CNR2 promoter regions	Santoro et al. (2017)
20 MS patients with chronic refractory neuropathic pain (no information on MS type)	7/13	(21–51)	No information provided	No information provided	Nabiximols for 6 weeks Patients were instructed to titrate their daily dose steadily as required over 2 weeks, to a maximum of 40 puffs/day	No improvement of pain and spasticity No modification of CD3+, CD14+, CD19+, CD56+, CD4+, CD8+ cell frequency in peripheral blood No modification of FAAH or NAPE-PLD activity in circulating lymphocytes No modification of CB1 or CB2 expression on CD14+, CD19+, CD56+, CD4+, CD8+ circulating cells	Centonze et al. (2009)
100 MS patients (74 SPMS and 26 PPMS)	25/75	52 \pm 7.7	No information provided	No information provided	Natural cannabis oil extract (Cannador), containing Δ 9-THC:CBD 2:1 (0.25:0.125 mg) Treatment duration was 15 weeks, and doses were adjusted according to side effects, with maximal oral dose of 0.25 mg/kg/day of Δ 9-THC	No effect on serum levels of IFN- γ , IL-10, IL-12 or CRP No effect on frequency of circulating IFN- γ -expressing CD3+ T cells	Katona et al. (2005)

Table 4 (continued)

Type of study	Gender (m/f)	Age (years) mean ± SD (range)	Disease duration (years) mean ± SD	EDSS score mean (min-max)	Treatment	Main findings	Ref
16 MS patients (10 SPMS and 6 PPMS)	11/5	46 ± 7.9	15 ± 10.7	6.2	The following treatments were administered to all patients in a two-fold crossover study, separated by 4-weeks washout: Dronabinol (–)-trans-Δ9-THC, 2.5 mg; <i>C. sativa</i> whole plant standardized extract (Δ9-THC 2.5 mg, 20–30% CBD, <5% other cannabinoids); Placebo (containing oil vehicle only)	All treatments had no effects on ex vivo PHA-, anti-CD2/anti-CD28-, anti-CD3/anti-CD28- or anti-CD3-induced proliferation of T cells (but data not shown), or on circulating leukocyte subsets (CD4, CD8, CD14, CD15, CD16, CD19, CD45RA, CD45RO and CD56 (but data not shown) or on plasma levels of TNF-α, IL-12p40, IL-12p70 and IL-10 Treatment with <i>C. sativa</i> whole plant standardized extract (but not other treatments) increased TNF-α production in ex vivo LPS-stimulated whole blood 7 MS patients with adverse event scores above median had also an increase in plasma IL-12p40	Killestein et al. (2003)
Ex vivo/in vitro PBMC from 3 HC, 18 MS patients naïve to nabiximols and 11 MS patients treated with nabiximols for (mean±SD) 29.1±8.2 months (5±2 puffs/day)	HC: 2/1 MS (naïve): 7/11 MS (nabiximols): 5/6	HC: 37.1±7.0 MS (naïve): 44.6±12.4 MS (nabiximols): 57.4±6.9	MS (naïve): 9.1±8.5 MS (nabiximols): 26.9±14.1	MS (naïve): 4.4 (1–8.5) MS (nabiximols): 6.9 (5–8)	30 min pre-treatment with nabiximols (1, 5 and 20 µM)+stimulation with LPS or ConA for 12 h	Dose-dependent inhibition of TNF-α release in cells from HC and from MS patients, with no differences between naïve and treated with nabiximols. Similar results were observed for IL-6 and IL-10 (but data not shown)	Sorosina et al. (2018)
PBMC from 7 HC and 7 RRMS patients	HC: no information provided. RRMS: 1/6	HC: no information provided. RRMS: 40.7±12.5	No information provided	2.6 (1.5–4)	CBD (1–20 µg/mL)+PHA (10 µg/mL)	CBD (2.5–20 µg/mL) suppressed proliferation in PBMC from MS patients more effectively than in PBMC from HC	Zgair et al. (2017)
PBMC from 10 HC, 4 RRMS patients, 2 SPMS patients	HC: no information provided. RRMS: 0/4 SPMS: 0/2	HC: no information provided. RRMS: 42.8±13.1 SPMS: 71.5±3.5	No information provided	RRMS: 2.9 (2–4.5) SPMS: 6 (5.5–6.5)	30 min pre-incubation with CBD (1–20 µg/mL)+PMA/ionomycin (concentrations not provided)	Decreased TNF-α, IFN-γ, and IL-17A-expressing CD3+ T cells in PBMC from HC at 20 µg/mL and in PBMC from MS patients at 2.5 µg/mL Decreased IL-2- and GM-CSF-expressing CD3+ T cells in PBMC from HC at	Zgair et al. (2017)

Table 4 (continued)

Type of study	Gender (m/f)	Age (years) mean \pm SD (range)	Disease duration (years) mean \pm SD	EDSS score mean (min-max)	Treatment	Main findings	Ref
Abbreviations: <i>CB1</i> cannabinoid receptor type 1, <i>CB2</i> cannabinoid receptor type 2, <i>ConA</i> concanavalin A, <i>CRP</i> C-reactive protein, <i>FAAH</i> fatty acid amide hydrolase, <i>GM-CSF</i> granulocyte-macrophage colony stimulating factor, <i>HC</i> healthy control, <i>IFN-β1b</i> interferon beta-1b, <i>IFN-γ</i> interferon-gamma, <i>IL</i> interleukin, <i>LPS</i> lipopolysaccharide, <i>MAPK14</i> mitogen-activated protein kinase 14, <i>MS</i> multiple sclerosis, <i>NAPE-PLD</i> N-acyl phosphatidylethanolamine phospholipase D, <i>NFKB1</i> nuclear factor kappa B subunit 1, <i>PBMC</i> peripheral blood mononuclear cells, <i>PHA</i> phytohaemagglutinin, <i>PPMS</i> primary progressive multiple sclerosis, <i>RPMS</i> relapsing-remitting multiple sclerosis, <i>RPS3</i> ribosomal protein S3, <i>SPMS</i> secondary progressive multiple sclerosis, <i>TNF-α</i> tumor necrosis factor-alpha, <i>TP53</i> tumor protein p53							
5 μ g/mL and in PBMC from MS patients at 1–2, 5 μ g/mL							

in SJL/J mice with TMEV-induced demyelinating disease and in C57Bl/6 mice with cuprizone-induced demyelination, which involve oligodendrocytes, astrocytes, and microglia, and allow the study of axonal damage and of inflammatory-induced demyelination and remyelination processes (Procaccini et al. 2015; Kipp et al. 2017). In summary, the efficacy of CBD has been documented in the most relevant animal models of MS, which are representative of the different clinical types of disease, involve both peripheral and central immune mechanisms, and are well established for the preclinical testing of therapeutic agents.

In comparison to in vivo studies in animals, ex vivo/in vitro studies with CBD are just a few, and the majority of them is performed on encephalitogenic T lymphocytes from lymph nodes or spleen of mice with (MOG_{35–55})-induced EAE, and only one study tested CBD on astrocytes from TMEV-induced demyelinating disease SJL/J mice (Mecha et al. 2013). No information exists so far therefore on the possible direct effects of CBD on other peripheral immune cells involved in MS such as CD8+ T cells, B cells, monocytes and macrophages, nor on other CNS resident immune cells such as oligodendrocytes, or microglia. Moreover, no studies so far tested CBD on the differentiation and function of CD4+ T cell lineages such as leading to autoimmunity in MS, such as Th1 and Th17, or playing protective roles, such as Th2 and Treg, despite preliminary evidence that CBD may downregulate molecular pathways leading to Th17 (Kozela et al. 2016a).

In spite of consistent preclinical evidence, studies in MS patients are scarce and affected by major limitations, which include, besides limited sample sizes and observational designs in most of them, lack of clinically relevant endpoints, short treatment durations and doses likely insufficient to affect targets and mechanisms involved in MS pathogenesis and progression. Against this background, it is not at all surprising that results obtained in MS patients were usually negative. Indeed, all the five studies in MS patients assessed just a few parameters related to the peripheral immune profile and function, and none of them included endpoints related to disease activity and/or disability progression. While it can be argued that no clinically relevant effects would follow without underlying modifications of immune functions, the main question is why no immune effects occurred in MS patients, despite extensive and convincing evidence about the activity of CBD in animal models, and even in vitro in human cells (Zgair et al. 2017; Sorosina et al. 2018). In this regard, detailed analysis of preclinical studies suggests that the key issue could be CBD dose levels. In animal models, CBD doses reducing EAE severity were consistently at least 5 mg/kg/day or higher. Although no studies assessed plasma and/or tissue levels of CBD, considering that treatments were usually administered i.p., a very rough estimation of tissue (peak) concentrations might be in the 10–15 μ M range. Such an estimate is consistent with results from in vitro experiments, where 0,1–10 μ M

CBD was commonly used. Remarkably, at those concentrations CBD is effective on encephalitogenic cells from rodents (Kozela et al. 2011, 2013, 2015, 2016a; Mecha et al. 2013; González-García et al. 2017; Yang et al. 2019) as well as on T cells from healthy subjects and MS patients (Zgair et al. 2017; Sorosina et al. 2018).

In clinical studies, on the contrary, CBD doses were consistently lower. In studies where nabiximols was used, a maximum of 40 puffs/day was administered by Centonze et al. (2009), while Sorosina et al. (2018) and Santoro et al. (2017) used lower daily doses. Nabiximols contains 2,5 mg of CBD per puff, which makes 100 mg/day (or about 1,4 mg/kg/day for a 70-kg subject). Katona et al. (2005) administered natural cannabis oil extract with maximal oral dose of 0,25 mg/kg/day of Δ^9 -THC. The oil extract contains Δ^9 -THC:CBD 2:1, thus it is inferred that the maximal oral dose of CBD was 0,125 mg/kg/day (or about 8,75 mg/day for a 70-kg subject). Finally, Killestein et al. (2003) used a *C. sativa* whole plant extract standardized to Δ^9 -THC 2,5 mg/capsule, with 20–30% CBD, and administered two capsules twice a day, which makes a total of 10 mg/day Δ^9 -THC and a putative 2–3 mg/day CBD. Available pharmacokinetic studies in humans (reviewed by Millar et al. 2018) show that administration of CBD, either by oromucosal spray in 5 to 20 mg doses (but, at least in one study, also up to 60–90 mg) or by oral capsules containing CBD 10 mg, consistently provide peak plasma concentration in the 1–4 ng/mL range, corresponding to about 0,01 μ M, thus well below theoretical concentrations reached in animal studies as well as, most importantly, well below concentrations which are effective in *in vitro* models based on either animal or human cells.

On these basis, it is proposed that – for CBD to be effective in humans as an immunomodulatory drug – higher doses should be considered. Indeed, also from a general point of view which doses of CBD are more effective in different disease states remain a matter of debate, nonetheless a recent review investigating what doses have been applied in clinical populations in a variety of medical contexts showed that CBD was well tolerated at oral doses up to 50 mg/kg/day (Millar et al. 2019), corresponding to a total amount 3,5 g/day for a 70-kg subject. Recently the U.S. FDA and the EMA recently approved CBD (as Epidiolex®, GW Pharmaceuticals) to treat rare forms of epilepsy in children, with maximum doses of 10 mg/kg twice a day. Remarkably, a recent study in children and adults with treatment-refractory epilepsy showed that Epidiolex® could be safely increased up to a maximum dosage of 50 mg/kg/day depending on tolerance and seizure control, with a positive linear correlation between CBD dosage (range from 5 to 50 mg/kg/day) and level (range from 7.1 to 1200 ng/mL) (Szaflarski et al. 2019). The concentration of 1200 ng/mL corresponds to about 3,8 μ M, thus quite close to the about 8 μ M CBD which was shown by Zgair et al. (2017) to suppress proliferation and proinflammatory

cytokine production in CD3+ T cells from MS patients. The study by Szaflarski et al. (2019) should thus be taken as a proof of concept that CBD concentrations, which *in vitro* exert immunomodulatory effects relevant for MS, can be safely reached in humans provided that appropriate doses are used. Studying the peripheral immune profile and function in people with epilepsy receiving Epidiolex®, and in particular in those on high dose regimens, could also provide useful information to properly design clinical studies of CBD as immune modulator in MS patients, in terms of dosing regimens as well as of relevant endpoints to be measured.

CBD has a complex pharmacological profile (Table 1), however the molecular targets acted upon by CBD were examined in just a few studies, and only in *in vitro* models based on rodent cells. Available results suggest no involvement of either CB1, CB2, 5-HT1A, TRPV1 or PPAR γ in CBD-dependent reduction of IL-17 secretion from T cells (Kozela et al. 2013), or of CB1 or CB2 in CBD-induced inhibition of T cell proliferation (Kozela et al. 2011), or of CB1, CB2 or GPR55 in CBD-induced inhibition of MOG_{35–55}/IL-12-induced IL-6 secretion and increased apoptosis in mouse encephalitogenic spleen cells (González-García et al. 2017). The only positive evidence presently available suggests a role for A_{2A} receptors in CBD-induced reduction of CCL2 secretion from mouse astrocytes (Mecha et al. 2013). In this regard, it may be of interest that EHP-101, a new chemical entity derived from CBD, acting as dual PPAR γ and CB2 agonist as well as activator of the hypoxia inducible factor (HIF) pathway, has been shown to exert anti-inflammatory effects *in vitro* in murine RAW264.7 and BV2 cell lines and rat primary microglia cells, and to reduce EAE severity in C57BL/6 J mice with either (MOG_{35–55})-induced EAE or with cuprizone-induced demyelination, as well as in the TMEV-IDD SJL/J mouse model (Navarrete et al. 2018, 2020). Taken as a whole, available evidence does not allow any meaningful conclusion about molecular targets involved in the effects of CBD in EAE and possibly in MS, unless that apparently its therapeutic potential cannot be explained just by means of a single target. Meanwhile, evidence about the activity of synthetic derivatives of CBD, such as HU-446 and HU-465 which exert inhibitory effects on encephalitogenic MOG_{35–55}-specific T cell line from lymph nodes of C57BL/6 mice (Kozela et al. 2016b), emphasize the relevance of CBD also as a molecular scaffold to develop novel drugs targeting the immune system.

In summary, available preclinical evidence in rodent models of EAE strongly support CBD as an effective immunomodulating and disease-modifying drug, although its cellular and molecular targets remain largely uninvestigated. In contrast, despite the established use of CBD-containing drugs in MS, evidence in patients is limited and usually negative, possibly due mainly to inadequate therapeutic regimens, in terms of both dose and duration. A

research agenda aiming at the proper assessment of CBD as an immunomodulating drug for MS should include, first of all, a detailed characterization of the effects of CBD on the key cellular and molecular mechanisms involved in MS pathogenesis and progression, including for example: (i) peripheral activation of pro-inflammatory T cells resulting from their interaction with antigen-presenting cells, such as macrophages; (ii) migration of activated T cells through the blood–brain barrier, mediated by adhesion molecules, proteases and chemokines; (iii) reactivation of T cells in the CNS through interaction with microglia, with subsequent secretion of pro-inflammatory cytokines, such as IFN- γ or IL-2, leading to activation of macrophages, other T cells and B cells; (iv) inflammation-induced damage of oligodendrocytes, resulting in destruction of the myelin sheath by cytotoxic mediators, such as TNF- α and oxidative radicals; (v) differentiation of B cells into plasma cells, secreting demyelinating antibodies in turn attracting macrophages, and triggering the complement cascade (Yamout and Alroughani 2018; Hemmer et al. 2002). Only fragmentary evidence exists so far, nearly only in T cells and mostly in rodent models, and much more work is needed, primarily in human cells. The most important and urgent needs regards however the development of well-designed clinical trials, aimed at testing adequate doses of CBD on clinically relevant efficacy endpoints. Indeed, based on available pharmacokinetic and therapeutic studies in other disease conditions, and in particular in epilepsy, doses higher than those used so far should be tested to properly assess the immunomodulatory potential of CBD in MS. Future studies should always include careful monitoring of plasma concentration in relation to dosing regimens, to collect key information which will allow to deal with the inherent pharmacokinetic heterogeneity of CBD, which is likely due at least in part to pharmacogenetic factors. Most importantly, such trials should include as primary efficacy endpoints clinically relevant measures of disease activity and/or disability progression, or at least evidence of magnetic resonance imaging-assessed disease activity, relapses and progression, neurological rating scales, measures of cognitive impairment, fatigue scales, as assessed by patient and physician, as well as patient reported outcomes (CHMP, 2015). Nevertheless, even based on the limited evidence so far available, CBD appears as a highly promising drug with significant immunomodulating and disease-modifying potential for MS, added benefits residing in its well established safety and tolerability profile.

Supplementary Information The online version contains supplementary material available at <https://doi.org/10.1007/s11481-021-09982-7>.

Acknowledgements The Authors gratefully acknowledge the support provided by the Italian Foundation for Multiple Sclerosis (FISM, Projects #2002/R/18 and #2003/R/67) and by the United States of America National Multiple Sclerosis Society (NMSS, Pilot Projects PP0791 and PP1255), which contributed to the development of some of

the ideas and of the experimental research reviewed in the text. Alessia Furgiuele developed a research program on innovative pharmacological approaches to modulate peripheral immunity and their relevance for autoimmune and neurodegenerative disease, as part of her work for the PhD Course in Clinical and Experimental Medicine and Medical Humanities, University of Insubria (XXXIV Cycle).

Author Contribution MC and FM defined the topic and developed the literature search strategy together with AF. AF performed the literature search screening for relevant titles and abstracts, finally selecting the titles included in the review, which were cross-validated by MC. MC wrote the first draft of the manuscript, with the exception of the paragraph dealing with CBD PGx, which was drafted by MF. AF drafted tables and figures. All authors were involved in critically revising the article for important intellectual content, and all authors approved the final version to be published. All authors agree to be accountable for all aspects of the work in ensuring that questions related to the accuracy or integrity of any part of the work are appropriately investigated and resolved, and declare to have confidence in the integrity of the contributions of their co-authors.

Funding Open Access funding provided by Università degli Studi dell'Insubria.

Compliance with Ethical Standards

Conflict of Interest The authors declare that they have no conflict of interest.

Open Access This article is licensed under a Creative Commons Attribution 4.0 International License, which permits use, sharing, adaptation, distribution and reproduction in any medium or format, as long as you give appropriate credit to the original author(s) and the source, provide a link to the Creative Commons licence, and indicate if changes were made. The images or other third party material in this article are included in the article's Creative Commons licence, unless indicated otherwise in a credit line to the material. If material is not included in the article's Creative Commons licence and your intended use is not permitted by statutory regulation or exceeds the permitted use, you will need to obtain permission directly from the copyright holder. To view a copy of this licence, visit <http://creativecommons.org/licenses/by/4.0/>.

References

- Al-Ghezi ZZ, Busbee PB, Alghetaa H, Prakash S, Nagarkatti PS, Nagarkatti M (2019a) Combination of cannabinoids, delta-9-tetrahydrocannabinol (THC) and cannabidiol (CBD), mitigates experimental autoimmune encephalomyelitis (EAE) by altering the gut microbiome. *Brain Behav Immun* 82:25–35
- Al-Ghezi ZZ, Miranda K, Nagarkatti M, Nagarkatti PS (2019b) Combination of cannabinoids, delta 9-tetrahydrocannabinol and cannabidiol, ameliorates experimental multiple sclerosis by suppressing neuroinflammation through regulation of miRNA-mediated signaling pathways. *Front Immunol* 10:1921
- Andre CM, Hausman J-F, Guerriero G (2016) Cannabis sativa: the plant of the thousand and one molecules. *Front Plant Sci* 7:19
- Atalay S, Jarocka-Karpowicz I, Skrzydlewska E (2019) Antioxidative and anti-inflammatory properties of cannabidiol. *Antioxidants (Basel)* 9:21
- Babalonis S, Haney M, Malcolm RJ, Lofwall MR, Votaw VR, Sparenborg S, Walsh SL (2017) Oral cannabidiol does not produce

- a signal for abuse liability in frequent marijuana smokers. *Drug Alcohol Depend* 172:9–13
- Banwell E, Pavisian B, Lee L, Feinstein A (2016) Attitudes to cannabis and patterns of use among Canadians with multiple sclerosis. *Mult Scler Relat Disord* 10:123–126
- Bergamaschi MM, Queiroz RHC, Zuardi AW, Crippa JAS (2011) Safety and side effects of cannabidiol, a Cannabis sativa constituent. *Curr Drug Saf* 6:237–249
- Brenton JN, Schreiner T, Karoscik K, Richter M, Ferrante S, Waldman A, Banwell B (2018) Attitudes, perceptions, and use of marijuana in youth with multiple sclerosis. *J Neurol* 265:417–423
- Buccellato E, Carretta D, Utana A, Cavina C, Speroni E, Grassi G, Candeletti S, Romualdi P (2011) Acute and chronic cannabinoid extracts administration affects motor function in a CREAE model of multiple sclerosis. *J Ethnopharmacol* 133:1033–1038
- Burstein S (2015) Cannabidiol (CBD) and its analogs: a review of their effects on inflammation. *Bioorg Med Chem* 23:1377–1385
- Cassano T, Villani R, Pace L, Carbone A, Bukke VN, Orkisz S, Avolio C, Serviddio G (2020) From Cannabis sativa to cannabidiol: promising therapeutic candidate for the treatment of neurodegenerative diseases. *Front Pharmacol* 11:124
- Centonze D, Mori F, Koch G, Buttari F, Codecà C, Rossi S, Cencioni MT, Bari M, Fiore S, Bernardi G, Battistini L, Maccarrone M (2009) Lack of effect of cannabis-based treatment on clinical and laboratory measures in multiple sclerosis. *Neurol Sci* 30:531–534
- Chen JW, Borgelt LM, Blackmer AB (2019) Cannabidiol: a new hope for patients with Dravet or Lennox-Gastaut syndromes. *Ann Pharmacother* 53:603–611
- CHMP – Committee for Medicinal Products for Human Use (2015) Guideline on clinical investigation of medicinal products for the treatment of multiple sclerosis. EMA/CHMP/771815/2011, Rev. 2
- Costiniuk CT, Jenabian MA (2020) Acute inflammation and pathogenesis of SARS-CoV-2 infection: cannabidiol as a potential anti-inflammatory treatment? *Cytokine Growth Factor Rev* 53:63–65
- Dobson R, Giovannoni G (2019) Multiple sclerosis – a review. *Eur J Neurol* 26:27–40
- Duchi S, Ovadia H, Touitou E (2013) Nasal administration of drugs as a new non-invasive strategy for efficient treatment of multiple sclerosis. *J Neuroimmunol* 258:32–40
- Elliott DM, Singh N, Nagarkatti M, Nagarkatti PS (2018) Cannabidiol attenuates experimental autoimmune encephalomyelitis model of multiple sclerosis through induction of myeloid-derived suppressor cells. *Front Immunol* 9:1782
- Esposito G, Filippis DD, Cirillo C, Iuvone T, Capoccia E, Scuderi C, Steardo A, Cuomo R, Steardo L (2013) Cannabidiol in inflammatory bowel diseases: a brief overview. *Phytother Res* 27:633–636
- Gallily R, Yekhtin Z (2019) Avidelk Cannabis extracts and cannabidiol are as efficient as Copaxone in suppressing EAE in SJL/J mice. *Inflammopharmacology* 27:167–173
- Gholamzad M, Ebtakar M, Ardestani MS, Azimi M, Mahmodi Z, Mousavi MJ, Aslani S (2019) A comprehensive review on the treatment approaches of multiple sclerosis: currently and in the future. *Inflamm Res* 68:25–38
- Giacoppo S, Galuppo M, Pollastro F, Grassi G, Bramanti P, Mazzon E (2015) A new formulation of cannabidiol in cream shows therapeutic effects in a mouse model of experimental autoimmune encephalomyelitis. *Daru* 23:48
- Giacoppo S, Pollastro F, Grassi G, Bramanti P, Mazzon E (2017) Target regulation of PI3K/Akt/mTOR pathway by cannabidiol in treatment of experimental multiple sclerosis. *Fitoterapia* 116:77–84
- Gonçalves ED, Dutra RC (2019) Cannabinoid receptors as therapeutic targets for autoimmune diseases: where do we stand? *Drug Discov Today* 24:1845–1853
- González-García C, Torres IM, García-Hernández R, Campos-Ruiz L, Esparragoza LR, Coronado MJ, García Grande A, García-Merino A, Sánchez López AJ (2017) Mechanisms of action of cannabidiol in adoptively transferred experimental autoimmune encephalomyelitis. *Exp Neurol* 298(Pt A):57–67
- Hemmer B, Archelos JJ, Hartung HP (2002) New concepts in the immunopathogenesis of multiple sclerosis. *Nat Rev Neurosci* 3:291–301
- Hoffmeyer S, Burk O, von Richter O, Arnold HP, Brockmoller J, John A, Cascorbi I, Gerloff T, Roots I, Eichelbaum M, Brinkmann U (2000) Functional polymorphisms of the human multidrug-resistance gene: multiple sequence variations and correlation of one allele with P-glycoprotein expression and activity in vivo. *Proc Natl Acad Sci U S A* 97:3473–3478
- Hryhorowicz S, Walczak M, Zakerska-Banaszak O, Słomski R, Skrzypczak-Zielińska M (2018) Pharmacogenetics of cannabinoids. *Eur J Drug Metab Pharmacokinet* 43:1–12
- Iannotti FA, Hill CL, Leo A, Alhusaini A, Soubrane C, Mazzarella E, Russo E, Whalley BJ, Di Marzo V, Stephens GJ (2014) Nonpsychotropic plant cannabinoids, cannabidivarin (CBDV) and cannabidiol (CBD), activate and desensitize transient receptor potential vanilloid 1 (TRPV1) channels in vitro: potential for the treatment of neuronal hyperexcitability. *ACS Chem Neurosci* 5:1131–1141
- Iffland K, Grotenhermen F (2017) An update on safety and side effects of cannabidiol: a review of clinical data and relevant animal studies. *Cannabis Cannabinoid Res* 2:139–154
- Jarrar YB, Lee SJ (2014) Molecular functionality of CYP2C9 polymorphisms and their influence on drug therapy. *Drug Metabol Drug Interact* 29:211–220
- Kathmann M, Flau K, Redmer A, Tränkle C, Schlicker E (2006) Cannabidiol is an allosteric modulator at mu- and delta-opioid receptors. *Naunyn Schmied Arch Pharmacol* 372:354–361
- Katona S, Kaminski E, Sanders H, Zajicek J (2005) Cannabinoid influence on cytokine profile in multiple sclerosis. *Clin Exp Immunol* 140:580–585
- Khatami F, Mohajeri-Tehrani MR, Tavangar SM (2019) The importance of precision medicine in type 2 diabetes mellitus (T2DM): from pharmacogenetic and pharmacoeconomic aspects. *Endocr Metab Immune Disord Drug Targets* 19:719–731
- Killestein J, Hoogervorst ELJ, Reif M, Blauw B, Smits M, Uitdehaag BMJ, Nagelkerken L, Polman CH (2003) Immunomodulatory effects of orally administered cannabinoids in multiple sclerosis. *J Neuroimmunol* 137:140–143
- Kipp M, Nyamoya S, Hochstrasser T, Amor S (2017) Multiple sclerosis animal models: a clinical and histopathological perspective. *Brain Pathol* 27:123–137
- Klein TW (2005) Cannabinoid-based drugs as anti-inflammatory therapeutics. *Nat Rev Immunol* 5:400–411
- Kozela E, Lev N, Kaushansky N, Eilam R, Rimmerman N, Levy R, Ben-Nun A, Juknat A, Vogel Z (2011) Cannabidiol inhibits pathogenic T cells, decreases spinal microglial activation and ameliorates multiple sclerosis-like disease in C57BL/6 mice. *Br J Pharmacol* 163:1507–1519
- Kozela E, Juknat A, Kaushansky N, Rimmerman N, Ben-Nun A, Vogel Z (2013) Cannabinoids decrease the Th17 inflammatory autoimmune phenotype. *J Neuroimm Pharmacol* 8:1265–1276
- Kozela E, Juknat A, Kaushansky N, Ben-Nun A, Coppola G, Vogel Z (2015) Cannabidiol, a non-psychoactive cannabinoid, leads to EGR2-dependent anergy in activated encephalitogenic T cells. *J Neuroinflammation* 12:1
- Kozela E, Ana Juknat A, Gao F, Kaushansky N, Coppola G, Vogel Z (2016a) Pathways and gene networks mediating the regulatory effects of cannabidiol, a nonpsychoactive cannabinoid, in autoimmune T cells. *J Neuroinflammation* 13:136
- Kozela E, Haj C, Hanuš L, Chourasia M, Shurki A, Juknat A, Kaushansky N, Mechoulam R, Vogel Z (2016b) HU-446 and HU-465, derivatives of the non-psychoactive cannabinoid cannabidiol,

- decrease the activation of encephalitogenic T cells. *Chem Biol Drug Des* 87:143–153
- Lim K, See YM, Lee J (2017) A systematic review of the effectiveness of medical Cannabis for psychiatric, movement and neurodegenerative disorders. *Clin Psychopharmacol Neurosci* 15:301–312
- Loraschi A, Bellantonio P, Bortolon F, Capra R, Cavalla P, Costantino G, Lugaresi A, Martinelli V, Marrosu MG, Patti F, Rottoli M, Salvetti M, Sola P, Solaro C, Klersy C, Marino F, Zaffaroni M, Cosentino M (2016) Use of herbal remedies by multiple sclerosis patients: a nation-wide survey in Italy. *Neurol Sci* 37:613–622
- Lötsch J, Geisslinger G (2011) Pharmacogenetics of new analgesics. *Br J Pharmacol* 163:447–460
- Lowin T, Schneider M, Pongratz G (2019) Joints for joints: cannabinoids in the treatment of rheumatoid arthritis. *Curr Opin Rheumatol* 31:271–278
- Mazur A, Lichti CF, Prather PL, Zielinska AK, Bratton SM, Galluszawada A, Finel M, Miller GP, Radomin'ska-Pandya A, Moran JH (2009) Characterization of human hepatic and extrahepatic UDP-glucuronosyltransferase enzymes involved in the metabolism of classic cannabinoids. *Drug Metab Dispos* 37:1496–1504
- Mecha M, Feliú A, Iñigo PM, Mestre L, Carrillo-Salinas FJ, Guaza C (2013) Cannabidiol provides long-lasting protection against the deleterious effects of inflammation in a viral model of multiple sclerosis: a role for A2A receptors. *Neurobiol Dis* 59:141–150
- Mechoulam R, Shani A, Edery H, Grunfeld Y (1970) Chemical basis of hashish activity. *Science* 169:611–612
- Millar SA, Stone NL, Yates AS, O'Sullivan SE (2018) A systematic review on the pharmacokinetics of cannabidiol in humans. *Front Pharmacol* 9:1365
- Millar SA, Stone NL, Bellman ZD, Yates AS, England TJ, O'Sullivan SE (2019) A systematic review of cannabidiol dosing in clinical populations. *Br J Clin Pharmacol* 85:1888–1900
- Moher D, Liberati A, Tetzlaff J, Altman DG, PRISMA Group (2009) Preferred reporting items for systematic reviews and meta-analyses: the PRISMA statement. *PLoS Med* 6:e1000097
- Moreno-Martel M, Feliú A, Espejo-Porras F, Mecha M, Carrillo-Salinas FJ, Fernández-Ruiz J, Guaza C, de Lago E (2015) The disease-modifying effects of a Sativex-like combination of phytocannabinoids in mice with experimental autoimmune encephalomyelitis are preferentially due to Δ^9 -tetrahydrocannabinol acting through CB1 receptors. *Mult Scler Rel Dis* 4:505–511
- Muller C, Morales P, Reggio PH (2019) Cannabinoid ligands targeting TRP channels. *Front Mol Neurosci* 11:487
- Navarrete C, Carrillo-Salinas F, Palomares B, Mecha M, Jiménez-Jiménez C, Mestre L, Feliú A, Bellido ML, Fiebich BL, Appendino G, Calzado MA, Guaza C, Muñoz E (2018) Hypoxia mimetic activity of VCE-004.8, a cannabidiol quinone derivative: implications for multiple sclerosis therapy. *J Neuroinflammation* 15:64
- Navarrete C, García-Martin A, Garrido-Rodríguez M, Mestre L, Feliú A, Guaza C, Calzado MA, Muñoz E (2020) Effects of EHP-101 on inflammation and remyelination in murine models of multiple sclerosis. *Neurobiol Dis* 143:104994
- NCT02116010. ClinicalTrials.gov (n.d.) Pharmacogenetics of cannabinoid response. Accessed December 15, 2020. <https://clinicaltrials.gov/ct2/show/NCT00678730?term=NCT00678730&draw=2&rank=1>
- NCT02492074. ClinicalTrials.gov (n.d.) Gene-environment-interaction: influence of the COMT genotype on the effects of different cannabinoids – a PET study. Accessed December 15, 2020. <https://clinicaltrials.gov/ct2/show/NCT02492074?term=NCT02492074&draw=2&rank=1>
- Nichols JM, Kaplan BLF (2020) Immune responses regulated by cannabidiol. *Cannabis Cannabinoid Res* 5:12–31
- Nichols JM, Kumari E, Sherman J, Yang E-J, Dhital S, Gilfeather C, Yray G, Morgan T, Kaplan BLF (2020) CBD suppression of EAE is correlated with early inhibition of splenic IFN- γ + CD8+ T cells and modest inhibition of neuroinflammation. *J Neuroimm Pharmacol*. <https://doi.org/10.1007/s11481-020-09917-8>(online-ahead-of-print)
- O'Sullivan SE, Sun Y, Bennett AJ, Randall MD, Kendall DA (2009) Time-dependent vascular actions of cannabidiol in the rat aorta. *Eur J Pharmacol* 612:61–68
- Oh J, Vidal-Jordana A, Montalban X (2018) Multiple sclerosis: clinical aspects. *Curr Opin Neurol* 31:752–759
- Olson KC, Dellinger RW, Zhong Q, Sun D, Amin S, Spratt TE, Lazarus P (2009) Functional characterization of low-prevalence missense polymorphisms in the UDP-glucuronosyltransferase 1A9 gene. *Drug Metab Dispos* 37:1999–2007
- Pertwee RG (2008) The diverse CB1 and CB2 receptor pharmacology of three plant cannabinoids: Δ^9 -tetrahydrocannabinol, cannabidiol and Δ^9 -tetrahydrocannabinol. *Br J Pharmacol* 153:199–215
- Peyravian N, Deo S, Daunert S, Jimenez JJ (2020) Cannabidiol as a novel therapeutic for immune modulation. *Immunotargets Ther* 9:131–140
- Procaccini C, De Rosa V, Pucino V, Formisano L, Matarese G (2015) Animal models of multiple sclerosis. *Eur J Pharmacol* 759:182–191
- Rahimi A, Faizi M, Talebi F, Noorbakhsh F, Kahrizi F, Naderi N (2015) Interaction between the protective effects of cannabidiol and palmitoylethanolamide in experimental model of multiple sclerosis in C57BL/6 mice. *Neuroscience* 290:279–287
- Reich DS, Lucchinetti CF, Calabresi PA (2018) Multiple Sclerosis. *N Engl J Med* 378:169–180
- Ribeiro A, Ferraz-de-Paula V, Pinheiro ML, Vitoretti LB, Mariano-Souza DP, Quinteiro-Filho WM, Akamine AT, Almeida VI, Quevedo J, Dal-Pizzol F, Hallak JE, Zuardi AW, Crippa JA, Palermo-Neto J (2012) Cannabidiol, a non-psychoactive plant-derived cannabinoid, decreases inflammation in a murine model of acute lung injury: role for the adenosine A(2A) receptor. *Eur J Pharmacol* 678:78–85
- Rui-Jian Y, Ting-Ting L, Yi-Fang W, Wei-Shan C (2017) Single nucleotide polymorphisms of ABCB1 gene and response to etanercept treatment in patients with ankylosing spondylitis in a Chinese Han population. *Med (Baltimore)* 96:e5929
- Russo EB, Burnett A, Hall B, Parker KK (2005) Agonistic properties of cannabidiol at 5-HT1a receptors. *Neurochem Res* 30:1037–1043
- Sajjadi M, Ragerdi Kashani I, Pasbakhsh P, Hassani M, Ameneh Omidi A, Takzare N, Clarner T, Beyer C, Zendedel A (2017) Protective effects of cannabidiol on cuprizone-induced demyelination in C57BL/6 mice. *J Contemp Med Sci* 3:278–283
- Santoro M, Mirabella M, De Fino C, Bianco A, Lucchini M, Losavio F, Sabino A, Nociti V (2017) Sativex® effects on promoter methylation and on CNR1/CNR2 expression in peripheral blood mononuclear cells of progressive multiple sclerosis patients. *J Neurol Sci* 379:298–303
- Schabas AJ, Vukojevic V, Taylor C, Thu Z, Badyal A, Chan JK, Devonshire V, Traboulssee A, Sayao AL, Carruthers R (2019) Cannabis-based product use in a multiple sclerosis cohort. *Mult Scler J Exp Transl Clin* 5:2055217319869360
- Sorosina M, Clarella F, Ferrè L, Osiceanu AM, Unal NT, Mascia E, Martinelli V, Comi G, Benigni F, Esposito F, Martinelli Boneschi F (2018) Clinical response to nabiximols correlates with the down-regulation of immune pathways in multiple sclerosis. *Eur J Neurol* 25:e934–e970
- Stout SM, Cimino NM (2014) Exogenous cannabinoids as substrates, inhibitors, and inducers of human drug metabolizing enzymes: a systematic review. *Drug Metab Rev* 46:86–95
- Szaflarski JP, Hernando K, Bebin EM, Gaston TE, Grayson LE, Ampah SB, Moreadith R (2019) Higher cannabidiol plasma levels are associated with better seizure response following treatment with a pharmaceutical grade cannabidiol. *Epilepsy Behav* 95:131–136
- Taylor L, Gidal B, Blakey G, Tayo B, Morrison GA (2018) Phase I, randomized, double-blind, placebo-controlled, single ascending dose, multiple dose, and food effect trial of the safety, tolerability

- and pharmacokinetics of highly purified cannabidiol in healthy subjects. *CNS Drugs* 32:1053–1067
- Thompson AJ, Baranzini SE, Geurts J, Hemmer B, Ciccarelli O (2018) Multiple sclerosis. *Lancet* 391:1622–1636
- Werk AN, Cascorbi I (2014) Functional gene variants of CYP3A4. *Clin Pharmacol Ther* 96:340–348
- Yadav V, Bever C Jr, Bowen J, Bowling A, Weinstock-Guttman B, Cameron M, Bourdette D, Gronseth GS, Narayanaswami P (2014) Summary of evidence-based guideline: complementary and alternative medicine in multiple sclerosis: report of the guideline development subcommittee of the American Academy of Neurology. *Neurology* 82:1083–1092
- Yamout BI, Alroughani R (2018) Multiple Sclerosis. *Semin Neurol* 38:212–225
- Yang X, Bam M, Nagarkatti PS, Nagarkatti M (2019) Cannabidiol regulates gene expression in encephalitogenic T cells using histone methylation and noncoding RNA during experimental autoimmune encephalomyelitis. *Sci Rep* 9:1–10
- Zajicek JP, Sanders HP, Wright DE, Vickery PJ, Ingram WM, Reilly SM, Nunn AJ, Teare LJ, Fox PJ, Thompson AJ (2005) Cannabinoids in multiple sclerosis (CAMS) study: safety and efficacy data for 12 months follow up. *J Neurol Neurosurg Psychiatry* 76:1664–1669
- Zgair A, Lee JB, Wong JCM, Taha DA, Aram J, Di Virgilio D, McArthur JW, Cheng Y-K, Hennig IM, Barrett DA, Fischer PM, Constantinescu CS, Gershkovich P (2017) Oral administration of cannabis with lipids leads to high levels of cannabinoids in the intestinal lymphatic system and prominent immunomodulation. *Sci Rep* 7:14542
- Zhou T, Ahmad TK, Alrushaid S, Pozdirca M, Ethans K, Intrater H, Le T, Burczynski F, Kong J, Namaka M (2019) Therapeutic impact of orally administered cannabinoid oil extracts in an experimental autoimmune encephalomyelitis animal model of multiple sclerosis. *Biochem and Biophys Res Commun* 516:373–380
- Zurier RB, Burstein SH (2016) Cannabinoids, inflammation, and fibrosis. *FASEB J* 30:3682–3689

Publisher's Note Springer Nature remains neutral with regard to jurisdictional claims in published maps and institutional affiliations.